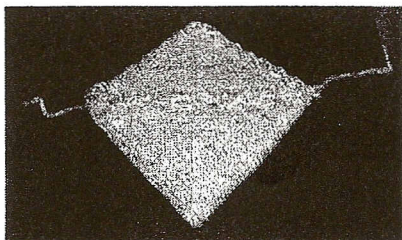


Fetal Demise Pouch

copyright 2003 Betsy Dey - All Rights Reserved
www.bevscountrycottage.com



Pattern Notes

The pouch is constructed from a mitered square with a mitered triangle for a pocket. It has a crocheted edge and length of crocheted chain as a tie, (though ribbon can be used instead). Baby is inserted, one corner is folded across, then the other and it is tied around. Dimensions are 9-11" square. Sport weight yarn is used. Anything thicker makes the baby look smaller and has been described as "uncomforting". Variegated yarn works up nicely. Standard abbreviations are used throughout. WS= Wrong Side
RS= Right side

Materials: Sport weight yarn; #6 or for a larger pouch #8 needles; size G crochet hook

Instructions:

Mitered Square-

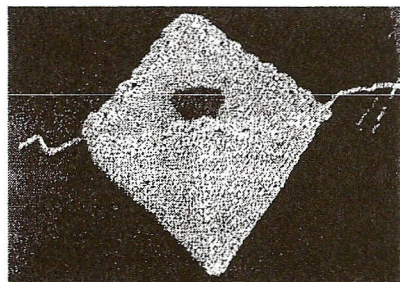
CO 101 stitches.

Repeat the following two rows until 3 stitches remain:

Row 1 & all odd rows (WS) - Work decrease at center (corner):
K to center 3 stitches; sl 1, K2tog, PSSO; K to end of the row.

Row 2 & all even rows (RS) - K even across.

When 3 stitches remain, slip1, K2tog, PSSO. Fasten off.



Mitered Triangle, (forms pocket)-

On cast on edge of square just made, Pick up 101 stitches.

Repeat the following two rows until 3 stitches remain:

Row 1 & all odd rows (WS) - K1, K2tog; knit to center 3 stitches; slip1, K2tog, PSSO; K to last 3 stitches, K2tog, K1.

Row 2 & all even rows (RS) - K even across.

When 3 stitches remain slip 1, K2tog, PSSO. Fasten off.



Finishing: Shell Edging-

Work 50 sc across top of triangle pocket. Ch 4, turn.

1 dc in first st. *Miss 4 sts; (1 dc, ch 1) 3 times, 1 dc in next st.* Repeat * to* until last 5 sts. Miss 4sts; (1 dc, ch 1, 1 dc) in last st. Fasten off.

For top edge, (two remaining sides of square), work 50 sc across one side, 3 sc in corner and 50 sc down last side. Ch 4, turn. Work dc shell row as above.

Tie-

Crochet about 18" of chain. Thread through one corner of triangle pocket.